

Retail space in the heart of the East Village

30 St. Mark's Place



Size

Ground: 1,500 sf
Basement: Full Basement

Rental

Available upon request

Frontage

Approximately 20 feet

Ceiling

Approximately 9 feet

Possession

Immediate

Comments

Located between Second Avenue and Third Avenue
Great for restaurant or cafe
Kitchen installed; venting in place
Long-term lease
Restrooms in space
Subways nearby: 4, 6, N, R

For further information, please contact:

Richard Du
President
212-505-6300 x235
rdu@dumann.com

DUMANN
R E A L T Y

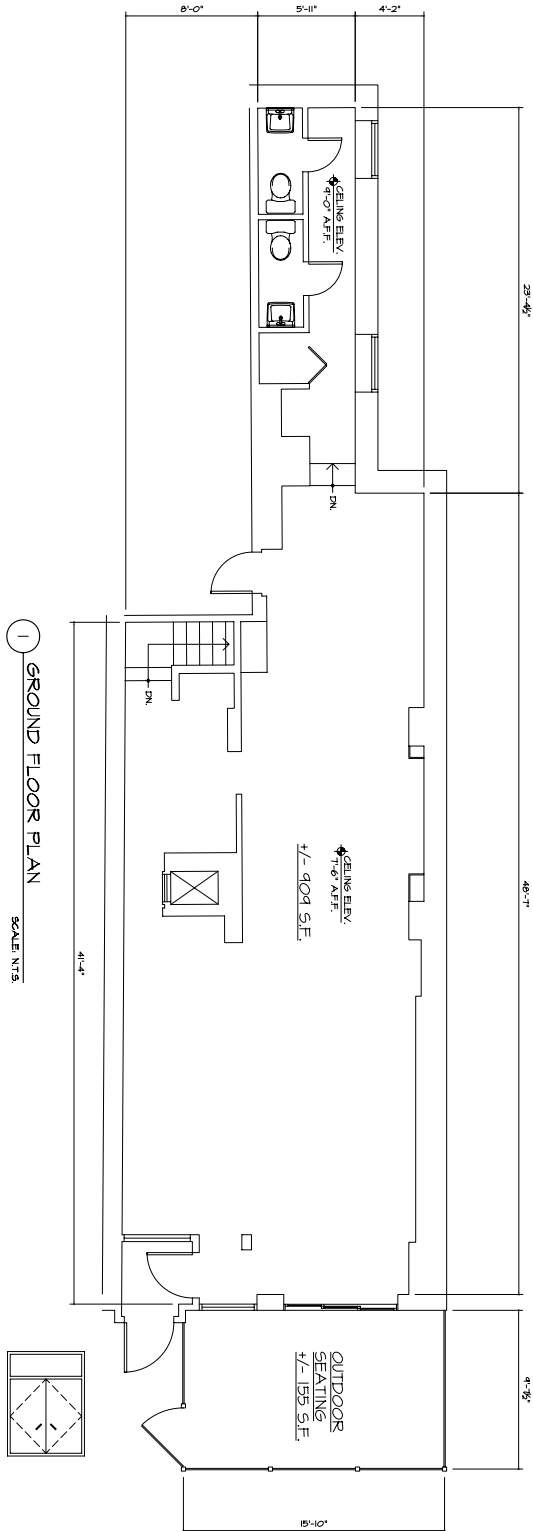
235 West 23rd Street, 5th Floor New York, NY 10011 Tel 212-505-6300 Fax 212-505-6444 www.dumann.com

Procuring broker shall not be entitled to a commission even upon producing a ready, willing, and able purchaser or lessee or as the procuring cause of the transaction. Procuring broker shall only be entitled to a commission, calculated in accordance with the rates approved by our principal, when, as and if received by us and only if such procuring broker executes a brokerage agreement acceptable to us and our principal and the conditions as set forth in the brokerage agreement are fully and unconditionally satisfied. Although all information furnished regarding property for sale, rental, or financing, is from sources deemed reliable such information has not been verified and no express representation is made nor is any to be implied as to the accuracy thereof and it is submitted subject to errors, omissions, change of price, rental or other conditions, prior sale, lease or financing, or withdrawal without notice and to any special conditions imposed by our principal.

Retail space in the heart of the East Village

30 St. Mark's Place

Ground Floor



Retail space in the heart of the East Village

30 St. Mark's Place

Basement

