

Commercial space in the heart of SOHO

# 45 MERCER STREET



## SIZE

2<sup>ND</sup> FLOOR: Approx. 1,800 sf

## RENTAL

Available upon request

## CEILING

Approximately 10 feet

## POSSESSION

Immediate

## COMMENTS

Located between BROOME STREET and GRAND STREET

Neighbors include FELDMAN GALLERY, RONALD FELDMAN FINE ARTS, MEDIA & BEYOND, MONTAUK MANHATTAN ENSEMBLE THEATRE, GOURMET GARAGE, and LAZARO JEWELRY

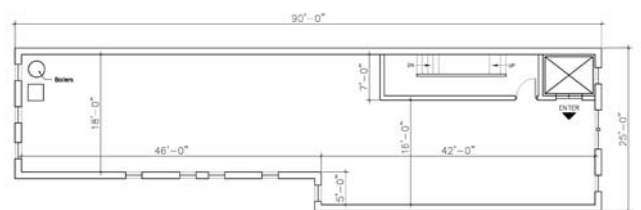
Great lighting due to the 6 bay windows

Showroom space

Subways nearby: 4, 5, 6, N, R, Q, W

## FLOORPLAN

45 Mercer Street, 2<sup>nd</sup> Floor



FOR FURTHER INFORMATION, PLEASE CONTACT:

Richard Du  
Chairman, CEO  
212.505.6300 x235  
rdu@dumann.com

**DUMANN** Realty, LLC

235 West 23rd Street / 5th Floor / New York NY 10011  
T 212.505.6300 / F 212.505.6444 / www.dumann.com

Procuring broker shall not be entitled to a commission even upon producing a ready, willing, and able purchaser or lessee or as the procuring cause of the transaction. Procuring broker shall only be entitled to a commission, calculated in accordance with the rates approved by our principal, when, as and if received by us and only if such procuring broker executes a brokerage agreement acceptable to us and our principal and the conditions as set forth in the brokerage agreement are fully and unconditionally satisfied. Although all information furnished regarding property for sale, rental, or financing, is from sources deemed reliable such information has not been verified and no express representation is made nor is any to be implied as to the accuracy thereof and it is submitted subject to errors, omissions, change of price, rental or other conditions, prior sale, lease or financing, or withdrawal without notice and to any special conditions imposed by our principal.