

Office space in the heart of the EAST VILLAGE

531-533 EAST 12TH STREET



SIZE

GROUND: Approx. 2,500 sf
BASEMENT: Approx. 2,500 sf
2ND FLOOR: Approx. 2,500 sf

RENTAL

Available upon request

CEILING

Approximately 9 feet

POSSESSION

Immediate

COMMENTS

Located between AVENUE A and AVENUE B
Neighbors include VENEIRO'S, TOKYO JOE'S (designer vintage wear), MINK, plus many other dining and retail destinations
Great for office use
Long term use
Restrooms in space
Subways nearby: L, N, Q, R, W, 4, 5, 6

FOR FURTHER INFORMATION, PLEASE CONTACT:

Frederick Faust
President
212.505.6300 x218
ffaust@dumann.com

Richard Du
Chairman, CEO
212.505.6300 x235
rdu@dumann.com

DUMANN Realty

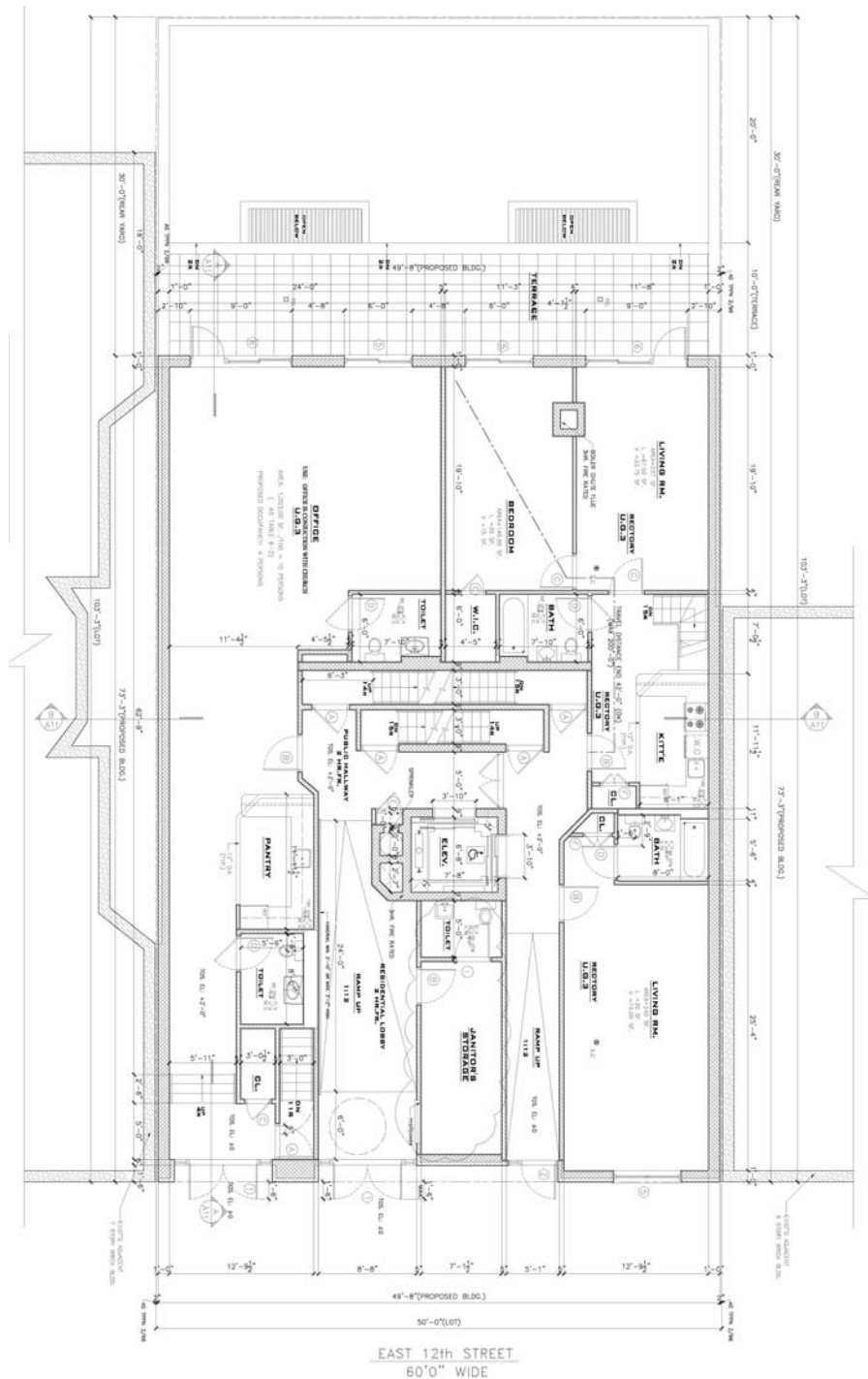
235 West 23rd Street / 5th Floor / New York NY 10011
T 212.505.6300 / F 212.505.6444 / www.dumann.com

Procuring broker shall not be entitled to a commission even upon producing a ready, willing, and able purchaser or lessee or as the procuring cause of the transaction. Procuring broker shall only be entitled to a commission, calculated in accordance with the rates approved by our principal, when, as and if received by us and only if such procuring broker executes a brokerage agreement acceptable to us and our principal and the conditions as set forth in the brokerage agreement are fully and unconditionally satisfied. Although all information furnished regarding property for sale, rental, or financing, is from sources deemed reliable such information has not been verified and no express representation is made nor is any to be implied as to the accuracy thereof and it is submitted subject to errors, omissions, change of price, rental or other conditions, prior sale, lease or financing, or withdrawal without notice and to any special conditions imposed by our principal.

Office space in the heart of the EAST VILLAGE

531-533 EAST 12TH STREET

FLOORPLAN
GROUND



DUMANN Realty

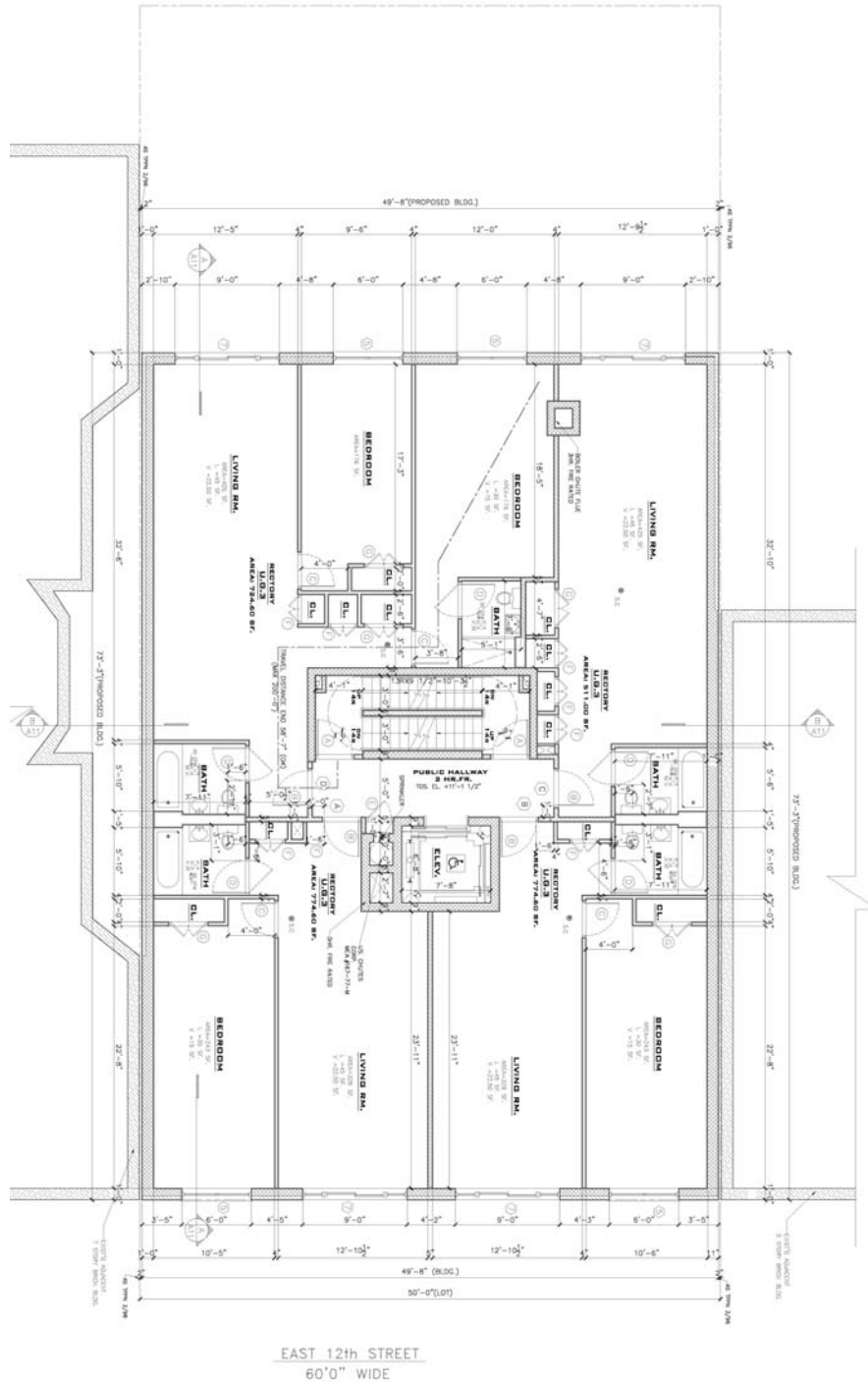
235 West 23rd Street / 5th Floor / New York NY 10011
T 212.505.6300 / F 212.505.6444 / www.dumann.com

Procuring broker shall not be entitled to a commission even upon producing a ready, willing, and able purchaser or lessee or as the procuring cause of the transaction. Procuring broker shall only be entitled to a commission, calculated in accordance with the rates approved by our principal, when, as and if received by us and only if such procuring broker executes a brokerage agreement acceptable to us and our principal and the conditions as set forth in the brokerage agreement are fully and unconditionally satisfied. Although all information furnished regarding property for sale, rental, or financing, is from sources deemed reliable such information has not been verified and no express representation is made nor is any to be implied as to the accuracy thereof and it is submitted subject to errors, omissions, change of price, rental or other conditions, prior sale, lease or financing, or withdrawal without notice and to any special conditions imposed by our principal.

Office space in the heart of the EAST VILLAGE

531-533 EAST 12TH STREET

FLOORPLAN
2ND FLOOR



DUMANN Realty

235 West 23rd Street / 5th Floor / New York NY 10011
T 212.505.6300 / F 212.505.6444 / www.dumann.com

Procuring broker shall not be entitled to a commission even upon producing a ready, willing, and able purchaser or lessee or as the procuring cause of the transaction. Procuring broker shall only be entitled to a commission, calculated in accordance with the rates approved by our principal, when, as and if received by us and only if such procuring broker executes a brokerage agreement acceptable to us and our principal and the conditions as set forth in the brokerage agreement are fully and unconditionally satisfied. Although all information furnished regarding property for sale, rental, or financing, is from sources deemed reliable such information has not been verified and no express representation is made nor is any to be implied as to the accuracy thereof and it is submitted subject to errors, omissions, change of price, rental or other conditions, prior sale, lease or financing, or withdrawal without notice and to any special conditions imposed by our principal.